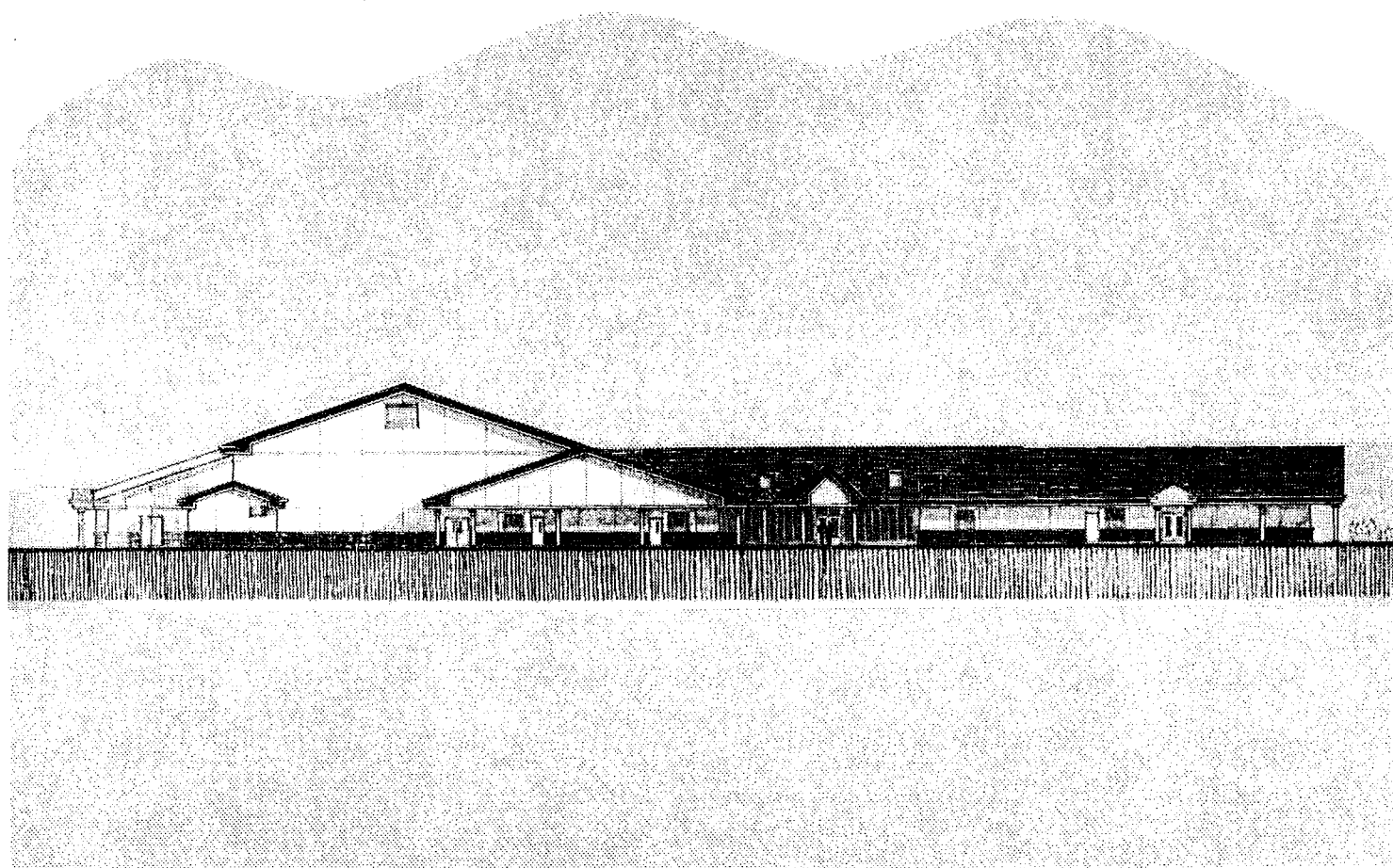


DEDICATION PROGRAM



CASHMERE VALE ELEMENTARY SCHOOL

OCTOBER 2, 1990

7:00 p.m.

THE BEGINNING

May 17, 1988:	Voter Approval of Bond for Vale Building
August, 1988:	Educational Specifications Steering Committee Organized
September, 1988:	Loofburrow Architects selected as design team
August 8, 1989:	Contract signed with Shea Construction Company
August, 1989:	Groundbreaking and Start of Construction
August 28, 1990:	School Opens

Vale Elementary School was built during the 1989-1990 school year with funds approved by school voters in May, 1988.

The school is designed to accommodate grades K-4 in five pods with each pod featuring individual classrooms opening into the central activity area which houses the restrooms and large work and meeting areas. The Vale Elementary School continues to house grades 5 and 6 until the Cashmere Middle School modernization is finished during the 1991-1992 school year. Each classroom features the latest in technology with designs allowing teachers, students and staff access to a Macintosh computer, the satellite communications system and the in-house video system as well as cable television.

A new cafeteria serves food to the students in the multi-purpose room which shares a common stage with the gymnasium. The gymnasium features adjustable baskets for youth of all ages.

An area near the office houses the library. The library includes many new activity areas including an arena reading area where students are elevated above the story presenter for better viewing and listening.

Outside the building the grass area was hydroseeded on September 26, 1990; by mid-October, 1990, students will have access to large grass areas for baseball, soccer and free play. Playground equipment located near the northwest corner of the building will be installed during the Fall, 1990.

Cashmere Vale Elementary
101 Pioneer Ave.
Cashmere, WA 98815

DEDICATION PROGRAM

Presiding..... Kim Kennedy
Board Chairman

Presentation of Flag and Pledge of Allegiance..... Cub Scouts

Welcome and Introduction of Special Guests..... Kim Kennedy
Board Chairman

History of the Vale Elementary School..... Richard Langum
Superintendent

Dedicatory Remarks..... Kim Kennedy
Board Chairman

DEDICATION CEREMONY

(BP - Board President; PF - Patrons and Friends)

BP: Education is important to survival and to expressive lives in a state that sponsors freedom and creativity.

PF: **We, the patrons and friends of Cashmere School District, dedicate this building to the ideals of freedom and creativity.**

BP: Education is a necessity for establishing common ideals and common goals in a democracy.

PF: **We, the patrons and friends of Cashmere School District, dedicate this building to all children for the establishment of common ideals and common goals.**

BP: Education is dedication to learning-learning that which is, and which may be. It has a past and a future. It requires diligent students, dedicated and effective teachers, modern ideas, and modern facilities. Education in a democracy recognizes but is never dominated by any hierarchy be it intelligence, religion, or political influence. It recognizes and promotes the rights and privileges of others. It recognizes that honest, devoted, sound political systems are a necessity to preserve the common good.

PF: **We, the patrons and friends of Cashmere School District, dedicate this building to learning and thinking, and to the peaceful practices of humanity.**

Presentation of Keys by Dick Loofburrow, Architect, to Kim Kennedy, Board President, who in turn presents them to Con Lautensleger, Vale Elementary Principal.

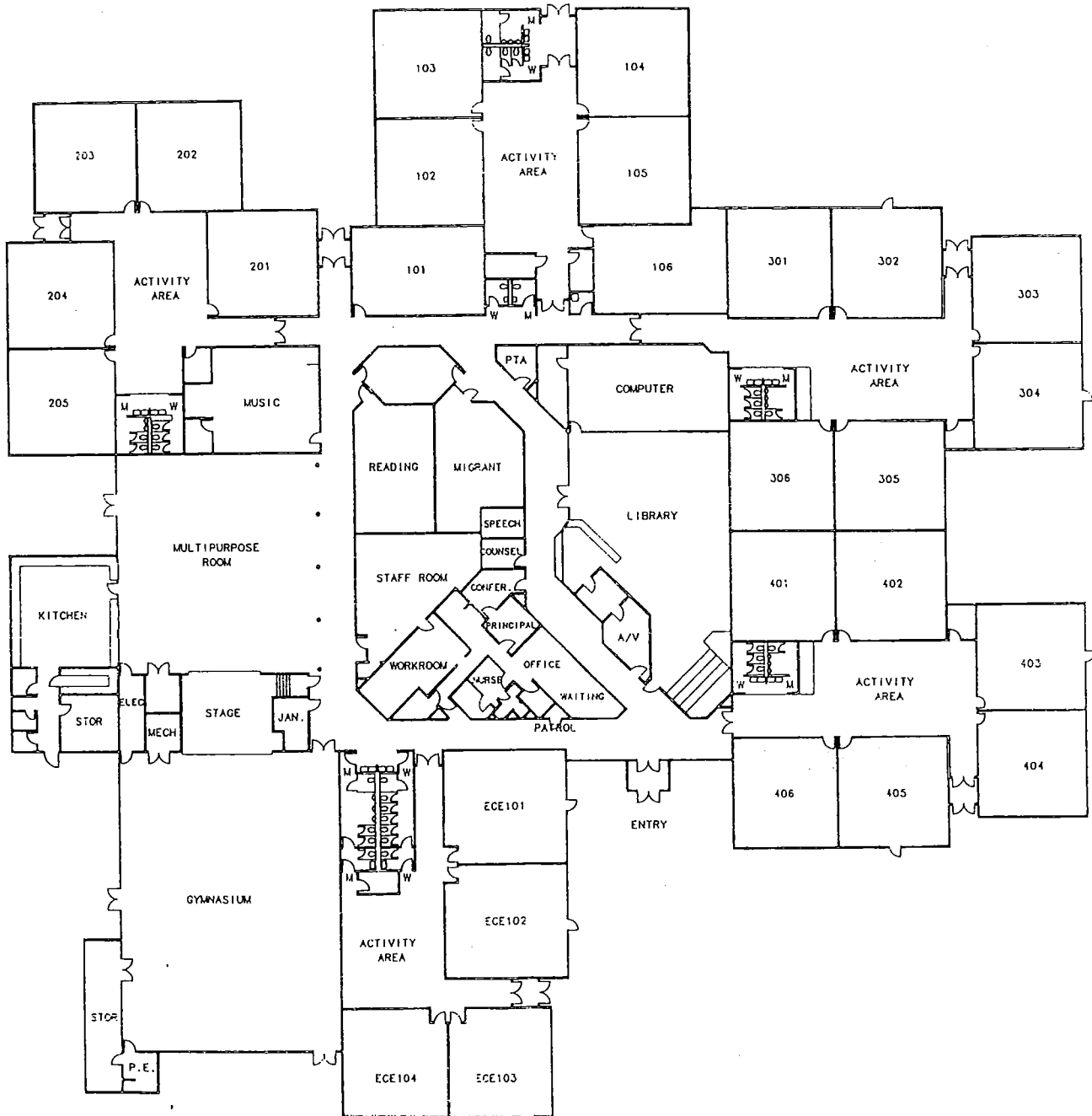
Welcome to Vale Elementary School..... Con Lautensleger
Principal

Special Music..... Vale Elementary Staff

Closing Comments..... Richard Langum
Superintendent

*(We invite you to join us for refreshments
served by The VIP and PTSA).*

VALE ELEMENTARY SCHOOL
101 Pioneer Avenue
Cashmere, WA 98815



**VALE ELEMENTARY SCHOOL
1990-91 Building Staff
Room Assignments**

CERTIFICATED

NON-CERTIFICATED

Principal
Con Lautensleger Office

Physical Education
Linda Reister P.E.

Office
Sharon Salley Office
Cheri Pipkin Office
Shelley Lowers (MS) Office

Building Assistant
Open

Music
Priscilla Baldock Music

Kindergarten
SheilaRae Frantz H.S.
Darla Lessard H.S.
Camille Rimmer H.S.

Library
Barbara deRubertis Library

Library
Marnell McDonald Library

Chapter 1/Regular
Doris Rogers Reading

Chapter 1/Regular
Marilyn Brown Reading
Mary McKenzie Reading

Grade One
Ginny Davidson 102
Marjorie Jones 105
Kim Ream 104
Pat Roberts 101
Stephanie Yousey 103

Chapter 1/Migrant
Leilani Bangs Migrant

Chapter 1/Migrant
Francisca Gonzalez Migrant
Mary Bailey Migrant

Special Education
Colleen Holmer 201

Grade Two
Polly Head-Corliss 205
Barbara Keeler 203
Carol Tinker 202
Susan Westberg 204

Counselor
Kathy Peryea Counselor

Nurse
Judy Milner Nurse

Speech
Maria Holland Speech

Custodial
Saream Dy
Bob Lipton

Grade Three
Dolores Brunner 301
Doris Rae Collins 302
Lisa Gix 106
Kappy Largent 304
JoAnn Lewis 303

Grade Five (M.S.)
Scott Green ECE 104
Kathy Lautensleger ECE 102
Nicole Orando ECE 101
Dave Rogers ECE 103

Kitchen
Carole Hovey Kitchen
Rosalyn Purdom Kitchen
Mable Smith Kitchen
Jeanie Sweat Kitchen
Lynn Zediker-Goehner Kitchen

Grade Four
Michelle Gutierrez 403
Carol Kennedy 404
Louise Kenoyer 405
Nancy Valeson 406

Grade Six (M.S.)
Shelly Milne 401
Julie Ryan 402
Don Smith 306
Reg Wiggins 305

Kindergarten Asst.
Kim George H.S.
Laurie King H.S.
Judy Phillips H.S.

Special Ed. Assts.
Pam Ahrens 201
Shannon Town 201

**VALE ELEMENTARY SCHOOL
1990-91 Building Staff**

CERTIFICATED

Principal
Con Lautensleger

Building Assistant
Open

Kindergarten
SheilaRae Frantz
Darla Lessard
Camille Rimmer

Grade One
Ginny Davidson
Marjorie Jones
Kim Ream
Pat Roberts
Stephanie Yousey

Grade Two
Polly Head-Corliss
Barbara Keeler
Carol Tinker
Susan Westberg

Grade Three
Dolores Brunner
Doris Rae Collins
Lisa Gix
Kappy Largent
JoAnn Lewis

Grade Four
Michelle Gutierrez
Carol Kennedy
Louise Kenoyer
Nancy Valeson

Physical Education
Linda Reister

Music
Priscilla Baldock

Library
Barbara deRubertis

Chapter 1/Regular
Doris Rogers

Chapter 1/Migrant
Leilani Bangs

Special Education
Colleen Holmer

Counselor
Kathy Peryea

Speech
Maria Holland

Grade Five (M.S.)
Scott Green
Kathy Lautensleger
Nicole Orando
Dave Rogers

Grade Six (M.S.)
Shelly Milne
Julie Ryan
Don Smith
Reg Wiggins

NON-CERTIFICATED

Office
Sharon Salley
Cheri Pipkin
Shelley Lowers (MS)

Library
Marnell McDonald

Chapter 1/Regular
Marilyn Brown
Mary McKenzie

Chapter 1/Migrant
Francisca Gonzalez
Mary Bailey

Nurse
Judy Milner

Custodial
Saream Dy
Bob Lipton

Kitchen
Carole Hovey
Rosalyn Purdom
Mable Smith
Jeanie Sweat

Kindergarten Asst.
Kim George
Laurie King
Judy Phillips

Special Ed. Assts.
Pam Ahrens
Shannon Town

CONTENTS OF VALE SCHOOL TIME CAPSULE:

Computer Diskette
Koosh Ball
Description of Teenage Mutant Ninja Turtle
Vale Staff Photo
List of Top Songs
List of Favorite Television Programs
List of Favorite Children's Books
1989-90 Cashmere School District School Calendar
1989-90 Cashmere School District Salary Schedules
1989-90 Vale School Budget
Vale Staff Predictions
Vale School Student Body Enrollment List
1989-90 Vale School Staffing List
1989-90 Cashmere School District Staffing List
Good Housekeeping Magazine
T.V. World Television Guide
Cashmere Valley Record Newspaper (4/25/90)
Wenatchee World Newspaper (4/26/90)

Time Capsule Committee:

Ginny Davidson, First Grade Teacher
Stephanie Yousey, First Grade Teacher
Con Lautensleger, Principal

ACKNOWLEDGMENTS

Architects

Loofburrow Architects
Yakima, Washington 98901

General Contractor

Shea Construction
Spokane, Washington 99211

Mechanical Contractor

Luhn, Shafer & Luhn Engineers
Spokane, Washington 99204