

Cashmere School District - Proposed Board Districts as Approximated Using Census 2020 Geography

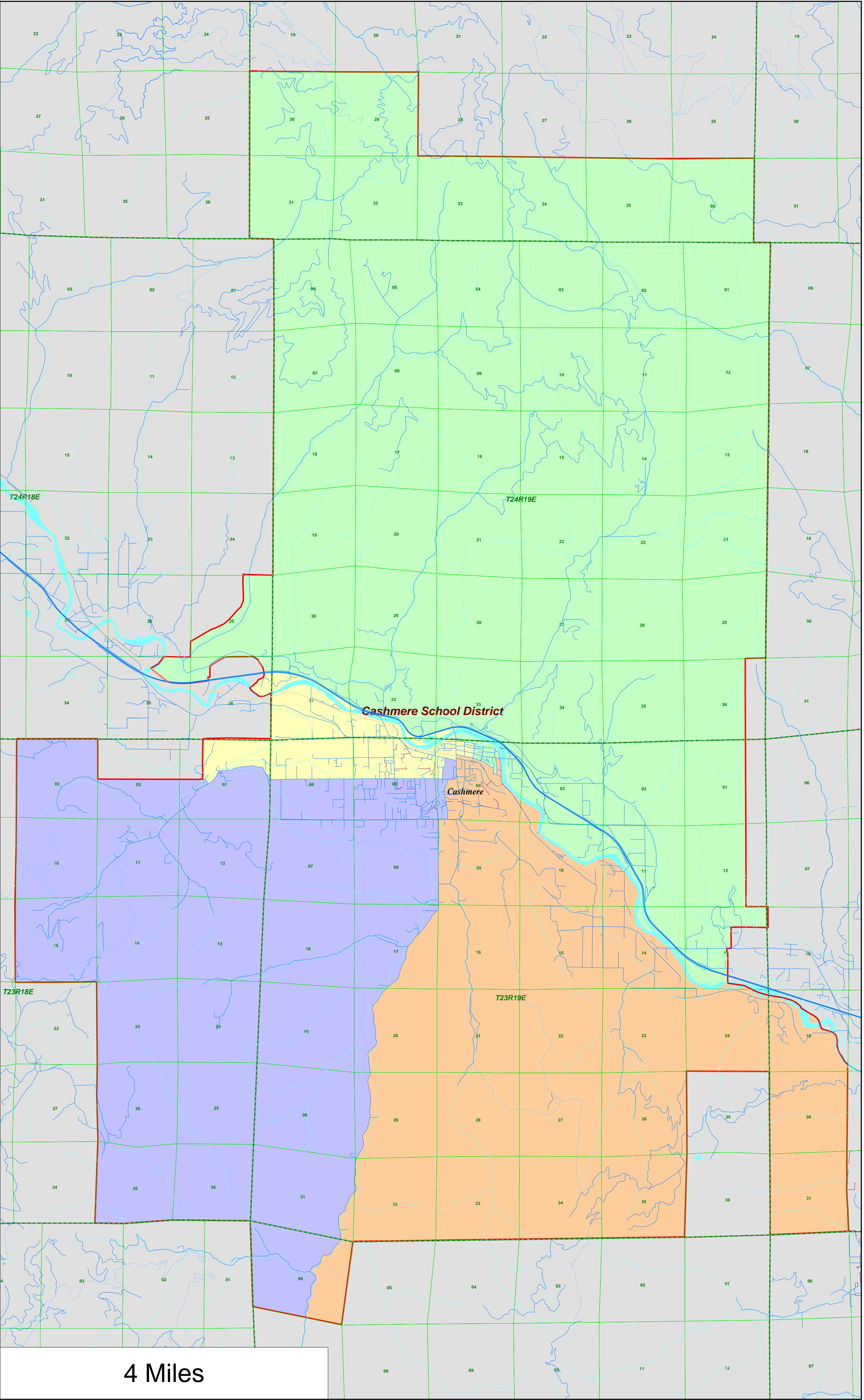
- 1st
- 2nd
- 3rd
- 4th

City Limits

District Outline

Section Centers

Township



4 Miles

04/18/2022

## **Cashmere School District District Summary Report**

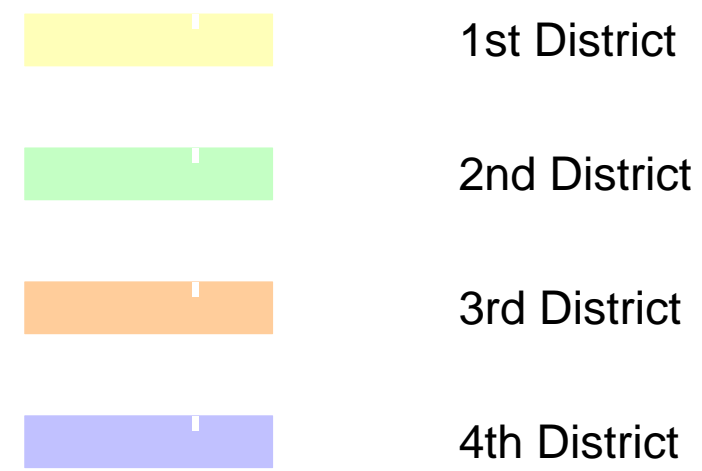
1

| Director<br>District<br>Number | Ideal<br>Population | Total<br>Population | Deviation<br>from<br>Ideal | %<br>Deviation<br>from<br>Ideal | White<br>Population | Hispanic<br>Origin<br>(of any race) | Non White<br>& Mixed |
|--------------------------------|---------------------|---------------------|----------------------------|---------------------------------|---------------------|-------------------------------------|----------------------|
| 1st                            | 1,969               | 1,974               | 5                          | 0.25                            | 1,277               | 651                                 | 697                  |
| 2nd                            | 1,969               | 1,977               | 8                          | 0.41                            | 1,345               | 601                                 | 632                  |
| 3rd                            | 1,969               | 1,961               | -8                         | -0.41                           | 1,586               | 341                                 | 375                  |
| 4th                            | 1,969               | 1,964               | -5                         | -0.25                           | 1,425               | 478                                 | 539                  |
| Totals.....                    |                     | <u>7,876</u>        | <u>0</u>                   |                                 | <u>5,633</u>        | <u>2,071</u>                        | <u>2,243</u>         |

Summary of Population by Race and Hispanic Origin

| District<br>Number | Total<br>Population | Total Population by Race |       |                              |   |       |   |               | Two or More<br>Races | Hispanic<br>Origin<br>(of any race) |
|--------------------|---------------------|--------------------------|-------|------------------------------|---|-------|---|---------------|----------------------|-------------------------------------|
|                    |                     | Single Race              |       |                              |   |       |   |               |                      |                                     |
|                    |                     | Total                    | White | Black<br>African<br>American | American<br>Indian and<br>Alaska Native | Asian | Native<br>Hawaiian and<br>Other Pacific<br>Islander | Other<br>Race | Total                |                                     |
| 1st                | 1,974               | 1,713                    | 1,277 | 5                            | 18                                      | 19    | 7   | 387           | 261                  | 651                                 |
| 2nd                | 1,977               | 1,766                    | 1,345 | 5                            | 11                                      | 16    | 4   | 385           | 211                  | 601                                 |
| 3rd                | 1,961               | 1,802                    | 1,586 | 2                            | 10                                      | 11    | 2   | 191           | 159                  | 341                                 |
| 4th                | 1,964               | 1,763                    | 1,425 | 7                            | 17                                      | 19    | 4   | 291           | 201                  | 478                                 |
| Totals.....        | 7,876               | 7,044                    | 5,633 | 19                           | 56                                      | 65    | 17  | 1,254         | 832                  | 2,071                               |

# Cashmere School District - Proposed Board Districts as Approximated Using Census 2020 Geography



City Limits

## District Outline

Sectional  
Centers

Townships 





Cashmere School District - Proposed Board Districts as Approximated Using Census 2020 Geography

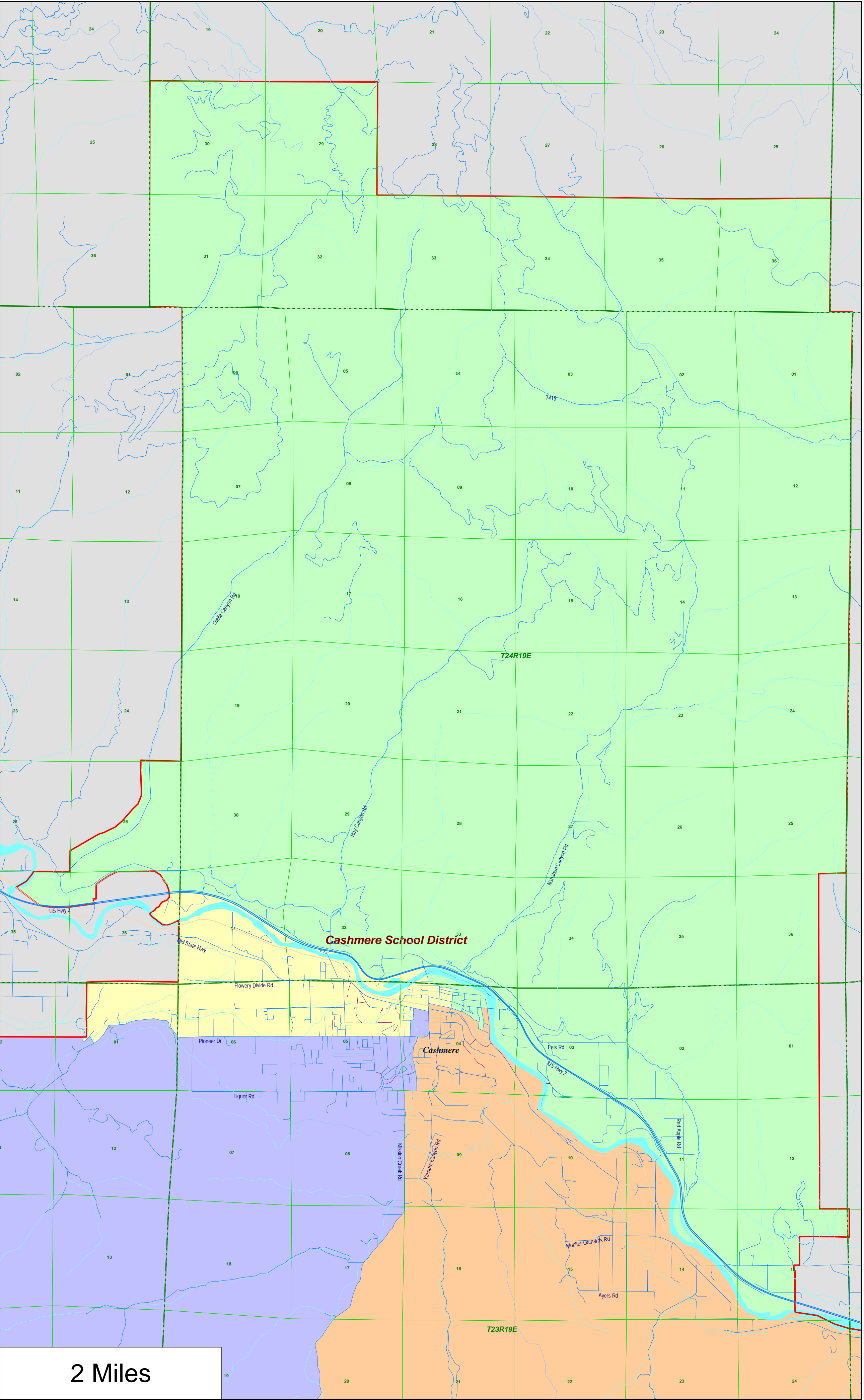
- 1st
- 2nd
- 3rd
- 4th

City Limits

District Outline

Section Centers

Township



Cashmere School District -  
Proposed Board Districts  
as Approximated Using  
Census 2020 Geography

- 1st District
- 2nd District
- 3rd District
- 4th District

City Limits



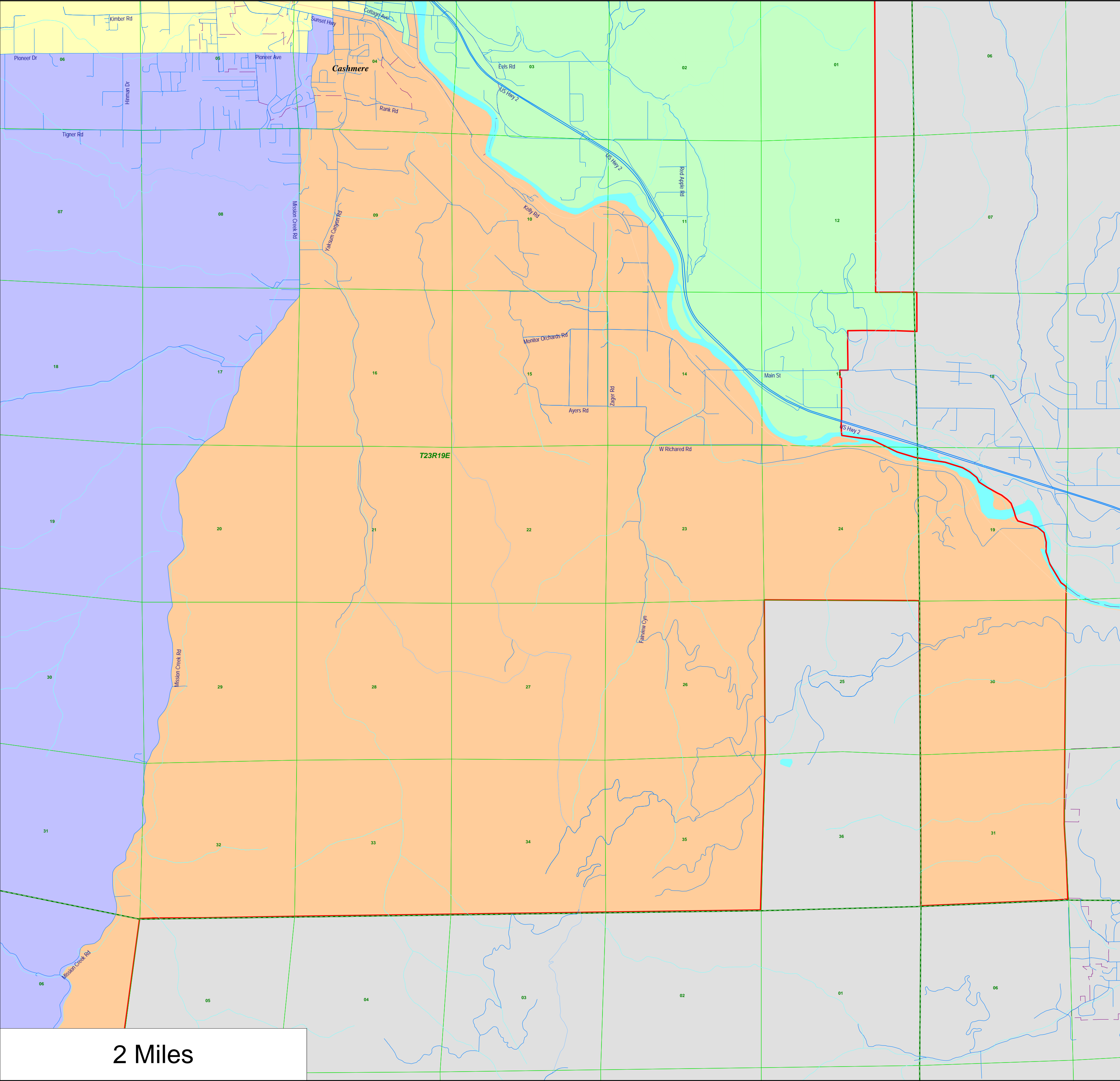
District Outline



Sectional  
Centers



Townships





Cashmere School District -  
Proposed Board Districts  
as Approximated Using  
Census 2020 Geography

- 1st District
- 2nd District
- 3rd District
- 4th District

City Limits



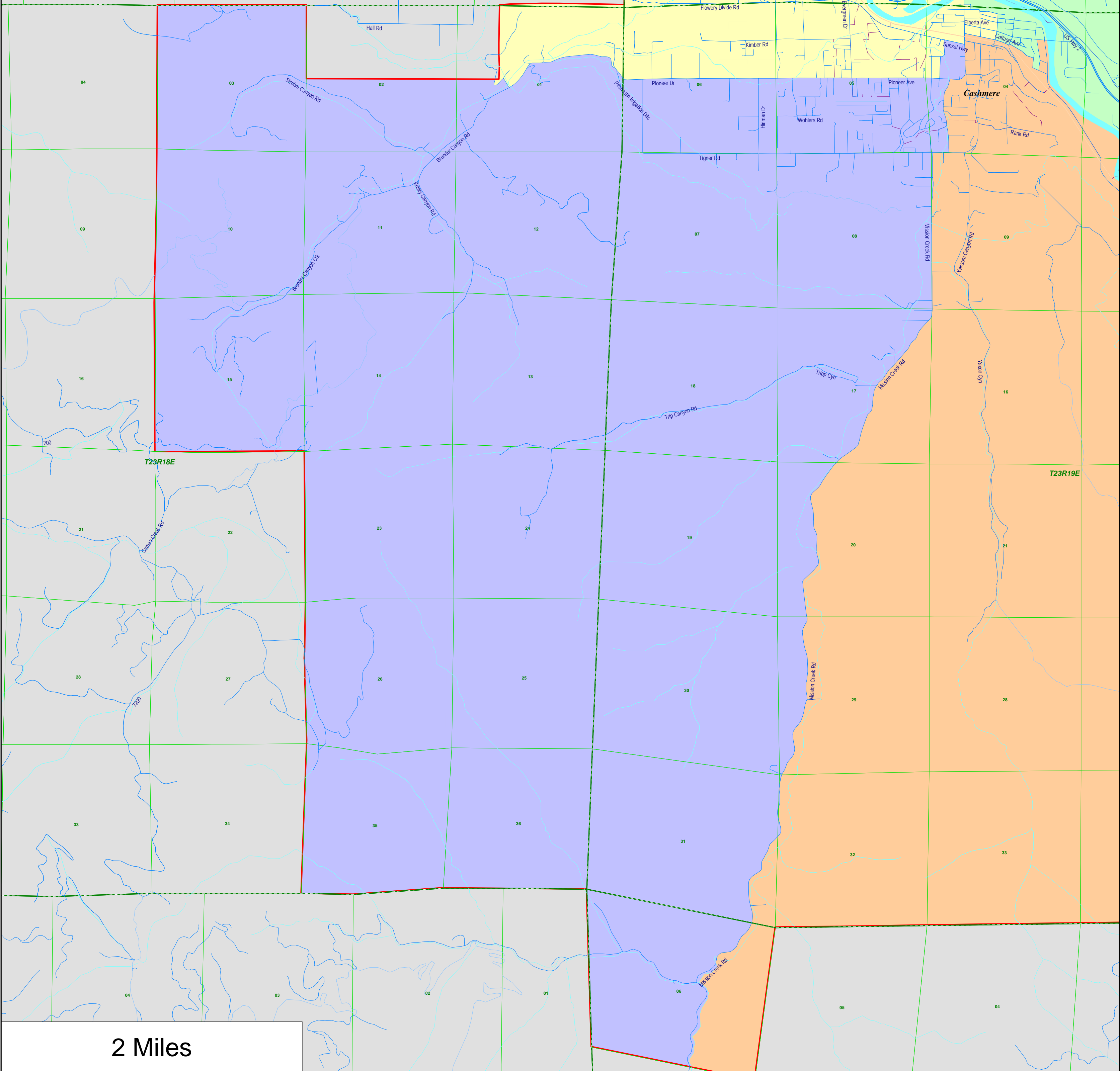
District Outline



Sectional  
Centers



Townships



Cashmere School District  
- Proposed Board Districts  
as Approximated Using  
Census 2020 Geography

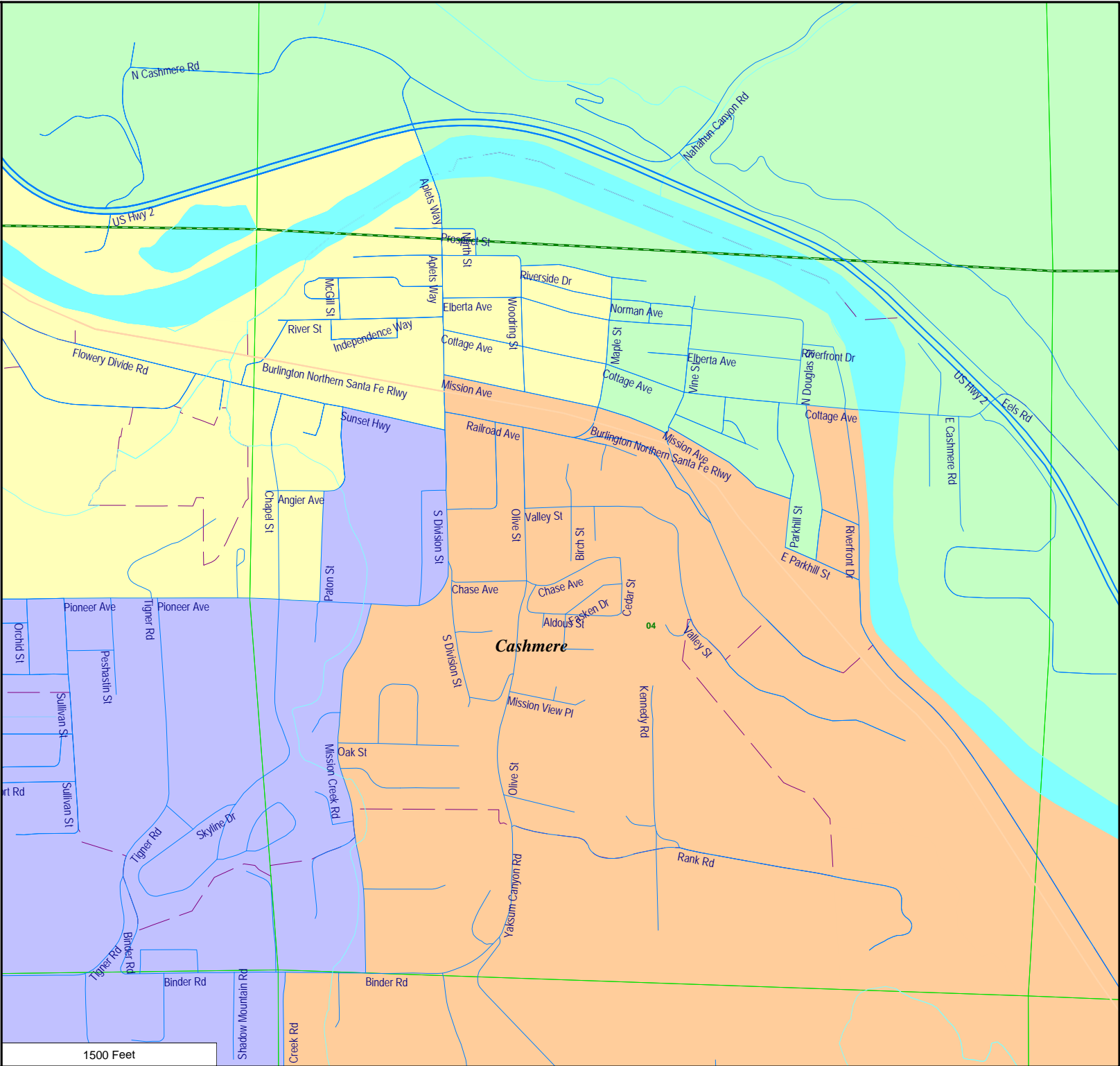
- 1st District
- 2nd District
- 3rd District
- 4th District

City Limits

District  
Outline

Sectional  
Centers

Townships





Cashmere School District -  
Proposed Board Districts  
as Approximated Using  
Census 2020 Geography

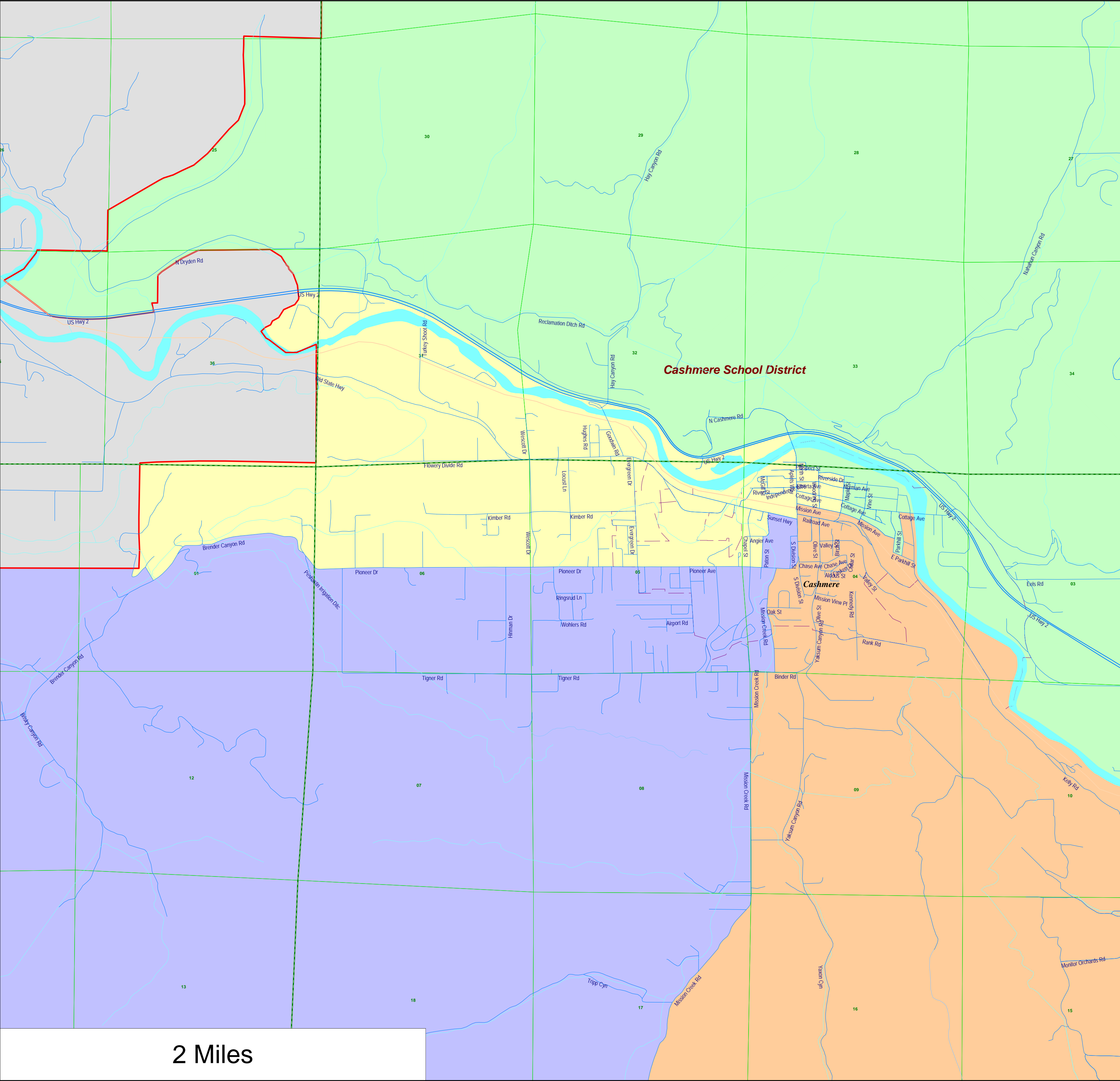
- 1st District
- 2nd District
- 3rd District
- 4th District

City Limits

District Outline

Sectional  
Centers

Townships



Cashmere School District -  
Proposed Board Districts  
as Approximated Using  
Census 2020 Geography

- 1st District
- 2nd District
- 3rd District
- 4th District

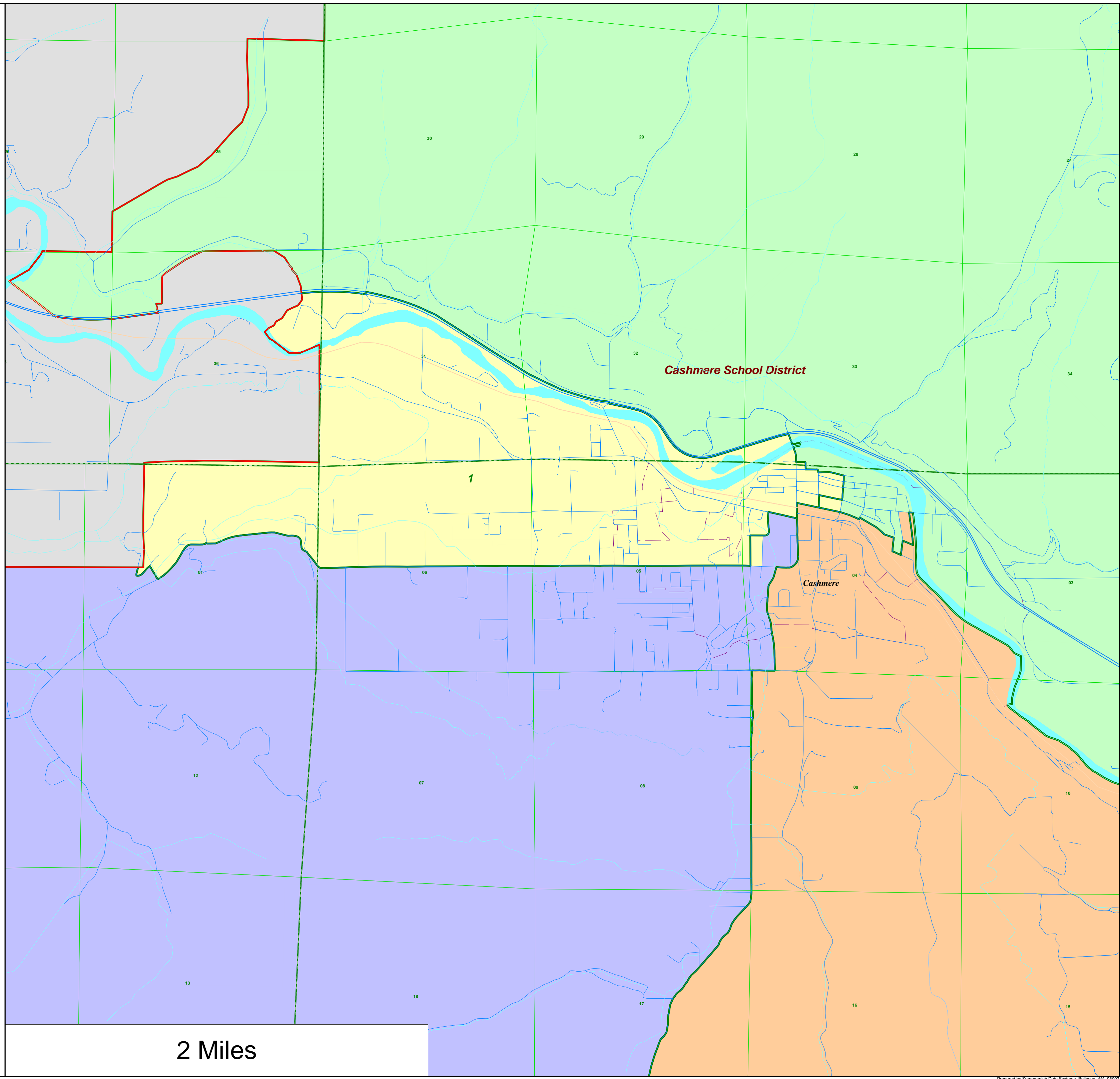
City Limits

Previous  
Director  
Districts

District Outline

Sectional  
Centers

Townships



2 Miles

The map displays the Cashmere area with various streets and landmarks. The northern section is yellow, the central section is orange, and the southern section is blue. Major roads include US Hwy 2, N Cashmere Rd, and the Burlington Northern Santa Fe Railway. The map also shows the Manahua Canyon Rd, E Cashmere Rd, and the Eels Rd. The word 'Cashmere' is prominently displayed in the center. A scale bar at the bottom left indicates 1500 Feet.

1500 Feet